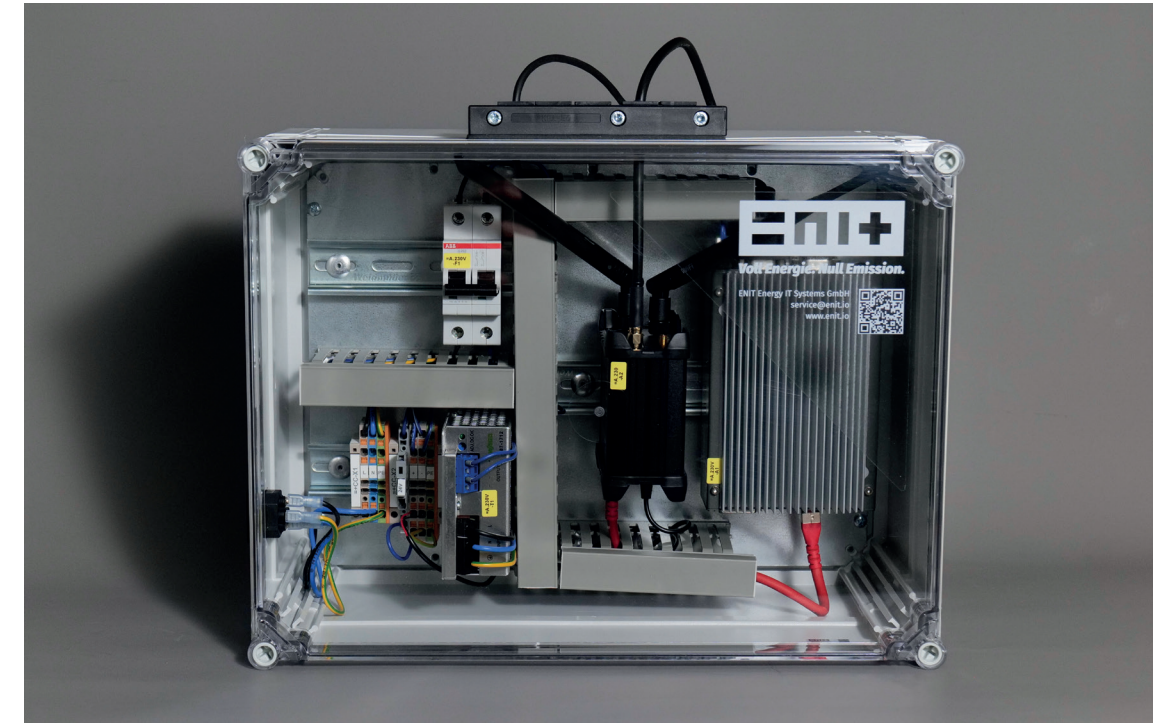


## Contents

- 1. Power supply
  - 1.1 ENIT module
  - 1.2 Connecting the power supply
- 2. Preparation for direct connection of the power supply
- 3. Optical readout head
  - 3.1 Communication ENIT agent
  - 3.2 Connection of readout head to transfer meter
  - 3.3 Connecting the readout head to ENIT agent COM1
- 4. External antenna
  - 4.1 Communication ENIT agent
  - 4.2 Housing feed-through for antenna cable
  - 4.3 Connecting the antenna cable to the LTE router
- 5. Network interfaces
  - 5.1 Information on network interfaces
  - 5.2 Customer network to eth1
- 6. Open Source Compliance



## Commissioning ENIT agent in the module

# 1. Stromversorgung

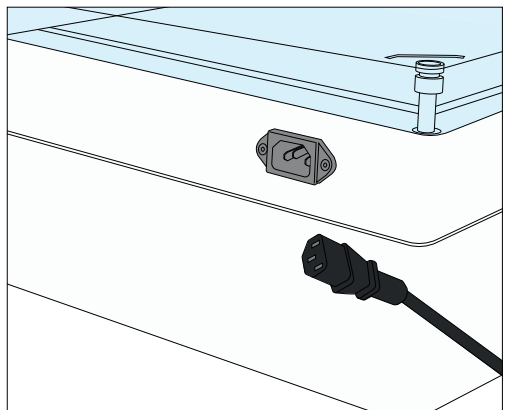
## 1.1 ENIT module

Supply voltage 230 V AC  
Fuse protection 230/400 V AC, B10

## 1.2 Connecting the power supply

The ENIT module is supplied via the supplied single-phase connection cable with IEC plug.

If the power supply is implemented directly, the supply cable of the IEC socket must be removed from terminal block X1! Otherwise the mains voltage may be present at the non-safe-to-touch contacts of the IEC socket!



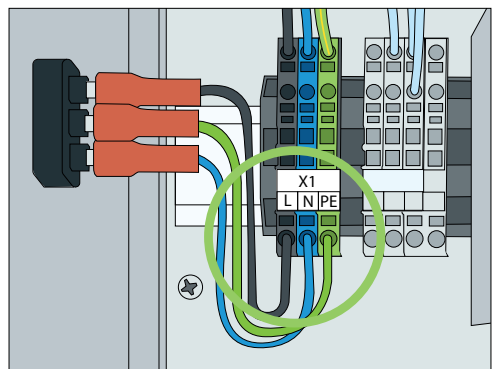
### Caution!

The housing cover may only be opened by a qualified electrician! Always remove the power plug from the housing before opening!

# 2. Preparation for direct

## connection of the power supply

When connecting the power supply directly, the supply cable of the IEC socket MUST be disconnected from terminal block X1! An external power supply can then be fed through the housing wall and connected directly to terminal block X1. Ensure that the polarity is correct.



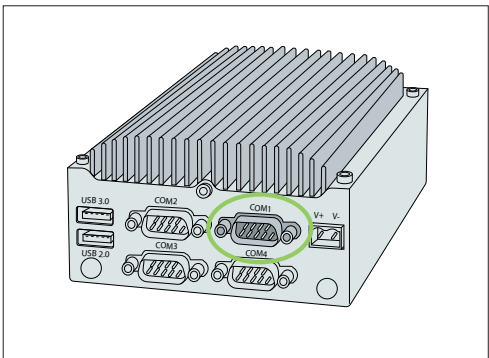
# 3. Optical readout head

## 3.1 ENIT agent communication

The ENIT agent communicates with the transfer meter via the optical readout head on the COM1 interface. When installing the readout head on the transfer meter, make sure that the cable runs vertically downwards from the readout head. Only then is the readout head correctly aligned and error-free communication guaranteed.

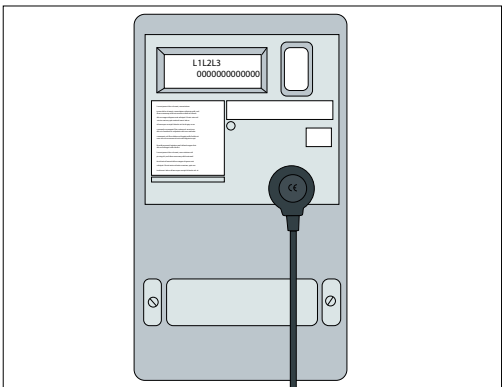
## 3.2 Connecting the readout head to ENIT agent COM1

The serial plug of the readout head is fed through the housing bushing on the top of the housing and connected to the COM1 interface of the ENIT agent.



## 3.3 Connecting the readout head to the transfer meter

The readout head is attached magnetically to the transfer meter. Care must be taken to ensure correct orientation. This is ensured if the cable runs vertically downwards.



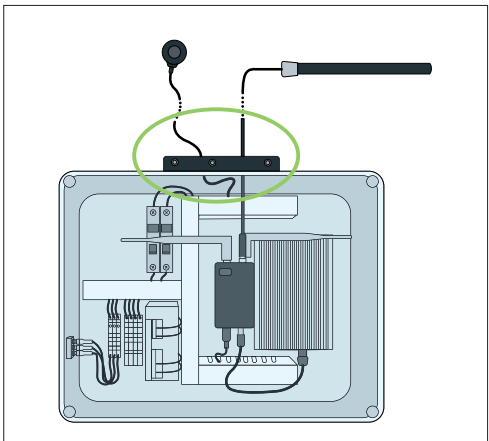
# 4. External antenna

## 4.1 ENIT agent communication

The ENIT agent communicates with the ENIT field device server via the module's router. The supplied external antenna must be installed outside the building for this purpose.

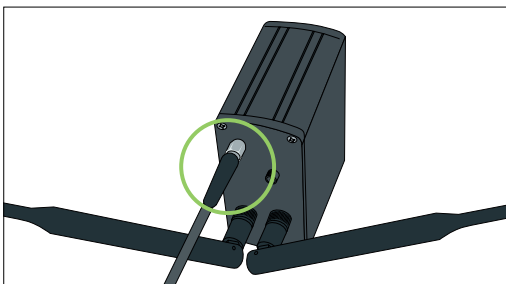
## 4.2 Enclosure feed-through for antenna cable

The antenna cable is fed through the housing bushing on the upper side of the housing.



## 4.3 Connecting the antenna cable to the LTE router

The antenna cable must be connected to the 'GSM Main' or 'LTE Main' connection of the router.



## 4.4 Mounting the outdoor mobile phone antenna

The mobile phone antenna must be firmly mounted on the outside of the building using the mounting base.

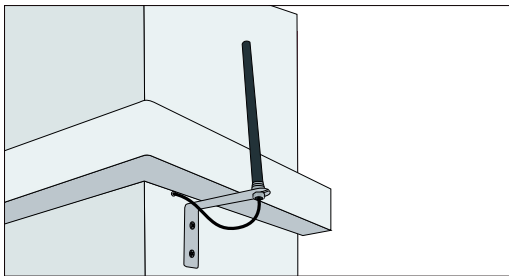


Fig. 2

# 5. Network interfaces

The ENIT agent can be integrated into the customer network via the eth1 interface. This enables access to the web interface via an IP address of your company network.

### eth0

Purpose: ENIT mobile router, maintenance network

### eth1

Purpose: Customer network

**For the necessary configuration of the ENIT agent, please contact: [service@enit.io](mailto:service@enit.io)**

The ENIT agent can be integrated into your company network via the eth1 interface (the left-hand interface in Fig. 1 and the upper interface in Fig. 2).

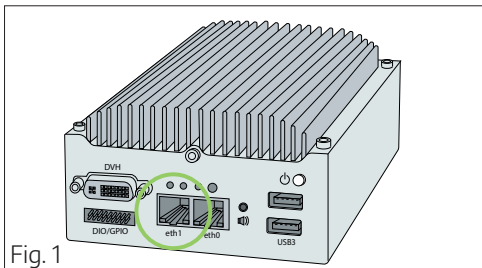


Fig. 1

# 6. Open Source Compliance

The product supplied with this device contains open source software whose licence information is included. It is provided using an FTP server on the device itself and the following access data:

- Server-IP: please contact your administrator or [service@enit.io](mailto:service@enit.io)
- User: osc
- Server URL: `ftp://osc:@<Server-IP>/osc`

Browsers (possibly with appropriate extensions) or stand-alone FTP clients such as FileZilla can be used for access. No password is required when logging in, the field can be left blank.

# 7. Further information

An german version of these installation instructions and other manuals and operating instructions can be found under the following link or QR code.



<https://enit.io/de/manuals>